

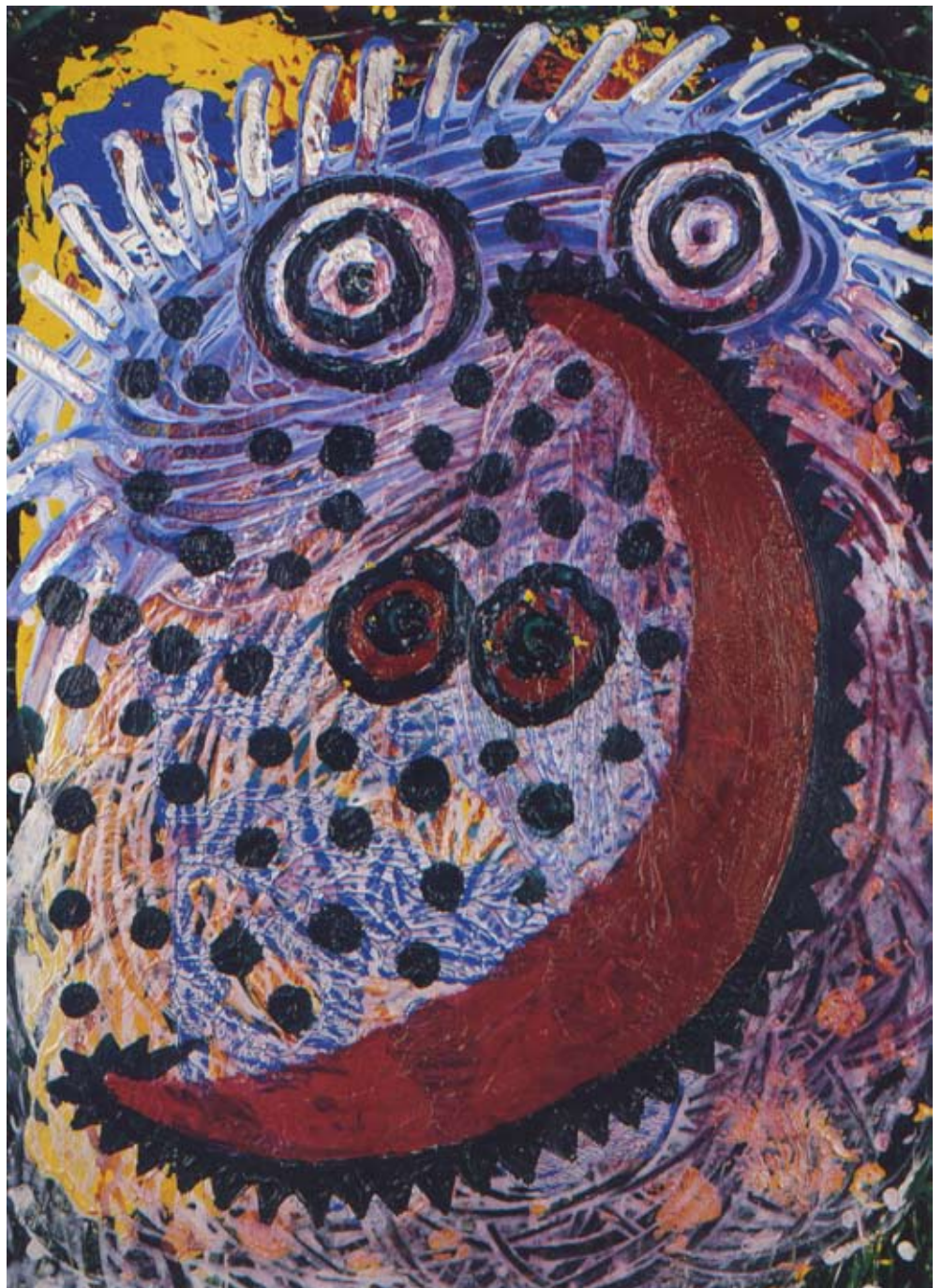
RECEPTION

3_10

Michael Buthe

May 1 – June 12, 2010

Opening Friday, April 30, 2010, 4–9 pm



A show of work by Michael Buthe (born 1944 in Sonthofen, Germany; died 1994 in Bonn) opens at RECEPTION on 30 April, coinciding with the Berlin Gallery Weekend.

The exhibition is built round a selection of works from the cycle *Steine - Hommage to Ramon Llull* (*Stones - Hommage to Ramon Llull*) which was created in 1991/92 and encompasses one hundred images in total. The selected items are painted-over photographs of stones in grass. These stones were part of an Environment that Michael Buthe temporarily installed in the landscape of Majorca.

Buthe also wrote a series of poems to accompany his cycle; in combination, *Steine* and the poems amounted to *Hommage für Ramon Llull*, the artist's tribute to a Christian mystic, poet and theologian. Born in Majorca in 1232, Llull went to North Africa as a missionary; after being subjected to stoning, he died on the passage back to his native island in 1316. The "stones" are painted-over and worked in such a way that they are literally multi-layered, and make visible the diverse cultural influences and visual idioms that Michael Buthe freely adapted and re-interpreted. From the early 1970s onward, an especially important role was played by oriental motifs and themes. The RECEPTION show supplements these works from the *Steine* cycle with a selection of sculptures and other pieces.

The collage principle of connecting materials of disparate origin was fundamentally important to Michael Buthe's practice of art, which extended to a diverse range of media. As well as drawing and painting, his work included sculpture, installation, text and film, and also voluminous diaries based on painting and drawings. In the present example, his



collage combined colourful painting and drawing with basic found materials such as plastic sheeting, discarded wood, pieces of tinfoil, or scraps of newspaper ripped from the page. Equally, however, the principle of assemblage was expressed in the very different thematic influences Buthe brought into correspondence. These included high and low art, Christian and Muslim narratives, northern European and Arabian philosophy and literature, the culture of the everyday and personal experience. Buthe was guided less by what happened to be en vogue among post-war German artists than by subjects that moved and touched him. His playful imagination, combined with his deep respect for life itself as well as his remarkable openness for cultural influences, led to works of great intensity and an oeuvre representing a notable position in twentieth-century art.

"I love life. The most amazing thing of all is life," Buthe stated in an interview with *Kölner Stadtrevue* in 1977. "I work very spontaneously. And I can do something only if I really feel it, otherwise I have to give up the attempt. I think it's very important to show feelings, to deliver feelings, in our very bleak and very impoverished world, where feelings are almost written off."

In 1969, Michael Buthe participated in Harald Szeemann's exhibition *When Attitude Becomes Form* at Kunsthalle Bern, in 1972 – likewise at Szeemann's invitation – in *documenta 5*, and in 1989 was featured alongside Sigmar Polke, Gerhard Richter, Rosemarie Trockel and others in the show *Refigured Painting - The German Image 1960-88* in the Guggenheim Museum, New York.

Major posthumous retrospectives dedicated to Buthe's work include shows at Kunstmuseum Düsseldorf (1999), Kunsthalle Bielefeld (1999), as well as Ernst-Barlach-Haus, Hamburg and Arp Museum Rolandseck, Remagen (both 2009).

List of Illustrations

cover: Michael Buthe: Nr. 13 from the cycle *Steine - Hommage für Ramon Llull*, 1991/92, painting on photography (one-off piece), 70 x 50 cm

left: Michael Buthe: Nr. 80 from the cycle *Steine - Hommage für Ramon Llull*, 1991/92, painting on photography (one-off piece), 70 x 50 cm

right (clockwise from top): Michael Buthe: Nr. 85 from the cycle *Steine - Hommage für Ramon Llull*, 1991/92, painting on photography (one-off piece), 70 x 50 cm;

Michael Buthe: Nr. 56 from the cycle *Steine - Hommage für Ramon Llull*, 1991/92, painting on photography (one-off piece), 70 x 50 cm;

Michael Buthe: Nr. 39 from the cycle *Steine - Hommage für Ramon Llull*, 1991/92, painting on photography (one-off piece), 70 x 50 cm;

Michael Buthe: Nr. 92 from the cycle *Steine - Hommage für Ramon Llull*, 1991/92, painting on photography (one-off piece), 70 x 50 cm



News

Special Opening Hours May 1 and May 2, 2010, parallel to the Gallery Weekend

Friday, April 30: Opening, 4–9 pm

Saturday, May 1: 10 am – 7 pm

Sunday, May 2: 10 am – 7 pm

upcoming show:

Koenraad Dedobbeleer *Theory Was Always Against Ideology*

Opening: Friday, June 25, 2010

About the Gallery

RECEPTION was founded in September 2009 by Christine Heidemann and Victor Gisler.

The gallery presents international contemporary art (painting, drawing, photography, video, installation).

Our main focus lies on the work of young emerging artists, complemented by shows of outstanding 20th century and 21st century artists.

The gallery is located at Kurfürstenstraße 5/5a, south of Potsdamer Platz. Nearest U-Bahn stations are Kurfürstenstraße (U1) and Bülowstraße (U2). Buses M48 and M85 stop at Kurfürstenstraße (corner of Potsdamer Straße).

We look forward to welcoming you to the gallery.

Contact

RECEPTION

Christine Heidemann

Kurfürstenstraße 5/5a

10785 Berlin

T. +49. (0)30. 26 93 14 55

info@reception-berlin.de

www.reception-berlin.de

Opening Hours: Wed–Sat 11 am – 6 pm and by appointment

Copyright: reception berlin contemporary GmbH, VG BILD-KUNST, Bonn

Thank you to Michael Buthe Estate, Cologne and Ted Bonin.